

# Golden Isles Woodworkers and Woodturners

November 11th 2023

[www.GIWW.org](http://www.GIWW.org)

**Location**  
**Jerry Gaffords shop**  
**109 South Point Dr**  
**St Simons**  
**November 11th**  
**10 am**

Saturday doings. Whooo 14 members showed up Farnsworth shop.. Biggest in a long time but yet 14 missing,,,,, Demo was suppose to be short but lots of questions and will be continued at Jerry's shop Raffle table at Jerry's.

## Minutes of October meeting.

Fourteen members made a showing at Farnsworth shop in Brunswick those not attending Doug Ballard hunting in S. D., Herb Miles, J. Redden, M. Pruitt, M. Barr Sailing, M. Hasty, J.Farnsworth, M. Lynskey, P. Speich playing with trains, R. Fishman, R. Pinkerton, S. Dmetruk, S. Pappas, and S. Young

Just half of our club What do we need to get you back into fold.

Steve Posey won the 50\$\$ gift certificate.

GVA kabob at St Simons was cancelled due to lack of interest.. To be sch. later date.

Talk about Woodworkers Supply a on line shop for small needed items.

Christmas party at Doug Ballard, St Simons Dec 9th Will send out a sign up sheet for goodies to bring.

New officers asked to volunteer.. President, V. Pres. and Secretary T

Karen was the head honcho in finding a place for us to meet. We discussed this at our meeting, and voted. Cost per month \$ 75. Voted to accept the location at the First Presbyterian church. A basement that is about size of Dougs shop.. Lighted,, Has heat AC and chairs Couple of tables to hold our stuff.

Next meeting at Jerry's Nov 11th and afterwards we will go to Dougs shop and transfer lathe, table and audio visual stuff. All hands makes small work.

GOOD NEWS!!  
October 25, 2023

I received word yesterday that we have reached an agreement with the First Presbyterian Church, located at 1105 Union Street, Brunswick, to call it our home. Our Facility Use Agreement starts January 1, for a term of one year, renewable at the end of 2023 with the agreement of both parties. Our first meeting in our new home will be January 13, 2024.

We will be meeting in the basement. There's a lot of space to spread out, folding chairs available. Eddie Wildsmith will be checking out the facility on Friday with the board members to see if it is feasible for us to take on a painting project. NO If so, we may be calling for volunteers.

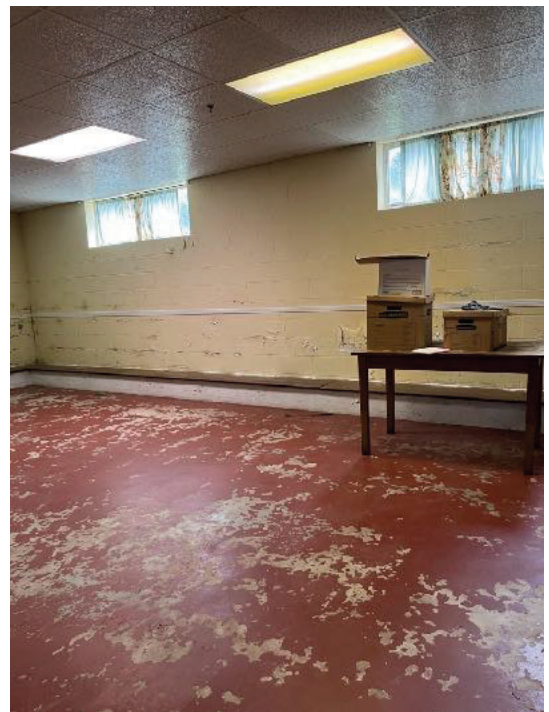
Our donation to the church for the use of the facility is \$75 per month. This commitment was agreed upon at our October meeting by a unanimous vote.

I am looking forward to this central meeting location. It is easily accessible to all of our members, whether they are coming from Kingsland, Fernandina, Townsend or St. Simons. Hopefully, our meeting attendance will increase, along with general interest.

**Karen Grogan**



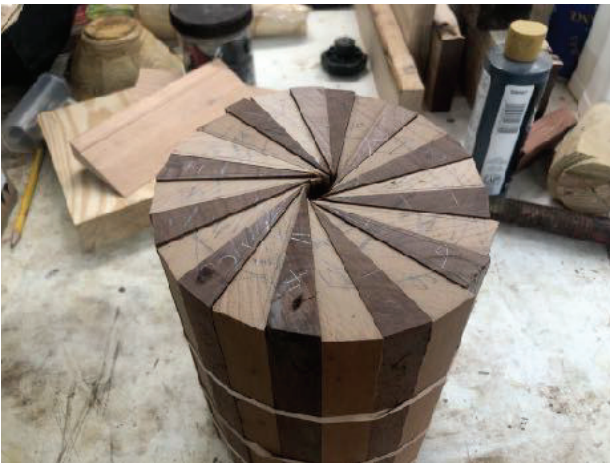
Entrance





First Presbyterian Church 4 blocks south of Gloucester on Union st. Corner of George and Union. The pic above shows entrance door off parking lot. Parking in two locations

November demo a continuation by C. Farnsworth



dry fit 24 pcs 12 walnut & 12 cherry



Don't let those rubber bands fool ya. I use steel hose clamps for gluing



Cone to force them apart covered with tape  
splines glued up with maple inserted



Next meeting will turn on Jerry's lathe,, keep fingers crossed

## Show and Tell

Paul S kilt this rattler in back yard,, its in the freezer 57" long 5" dia



## Pete Bartlett



pepper salt grinders to help season your meal and decorated round box

Charles W



Not sure what you call it.. A folding end table, side table. Maple, cherry with inlay.

Craig F



Box with screw on lid..  
Camphor, Bocote, B.Wal.,  
Blackwood

Barb H



Barb did a great job  
turning this sphere  
and enhancing???

Dave L



Very nice Dave



Jerry G



Directions to Jerrys  
St Simons Causeway to circle across from airport...Take  
DeMeere Rd around airport. Take a left

Geramino othwise known as Gerald D



rollin pin for Betty.. Look out Gerald she may try to roll you out

## discounts

1. **Case wood supply** [www.casewoodworking.com](http://www.casewoodworking.com) 1725 Grove point rd., Savannah, 912 927 9000 \$ 50.. gift certificate winner
2. **Florida Southern Wood Supply** [www.fspscjax.com](http://www.fspscjax.com) 5909 w. 5th st. Jacksonville,fl 904 786 4382  
min order \$ 350 delivery to you.. 10% off Very good pricing on maple, cherry, oak
3. **Hood Wood Supply** [www.hooddistribution.com](http://www.hooddistribution.com) 5311 Doolittle rd, Jacksonville 904 783 0170  
min order \$ 500 delivery to you no discount
4. **PennState** <https://www.pennstateind.com> 1-800-377-7297  
Log into site and place your order 10% OFF ITEMS BUT YOU MUST CONTACT THEM AFTER ORDER TO TELL THEM YOU ARE A MEMBER OF GIWW THEY HAVE CURRENT MEMBERSHIP
5. **Peachtree woodworking supply** [www.ptreeusa.com](http://www.ptreeusa.com) 770-458-55  
We do offer a 10% discount to guild members on most items. It does not qualify for machinery and other power tools. We do not charge your credit card at the time of purchase, only once it ships. The best thing to do would be place the order online and follow up with a email or call with the confirmation number and we can make sure you get the discount. Guild member GIWW
6. **Rockler Woodworking** 4643 River City Dr Ste 101, Jacksonville, FL 32246  
10% discount Phone: (904) 404-3240 Manager: Ryan Sedgley
7. **Shelia Bishop on facebook Laser Engraving 912 258 0951**