

Golden Isles Woodworkers and Woodturners

February 11th 2023

www.GIWW.org

Doug Ballard
Next meeting

February 11th

1377 Cate Rd
10 am

visitors welcome

The January meeting was cancelled due the possibility of snow.. At least it was cold enough to snow, and I know you southern folk can't drive in slippery conditions.

So anyways we expect to see all rosie faced kids at the next meeting and for those that have not sent in there dues. Bring a check 35.00 or cash on the barrel head will do just nicely.

Next meeting if you are reading this, is at our regular location 1377 Cate Rd. Its located on the corner of Cate and Perry Lane Rd.

Bring cash or checks for Karen

Demo will be on segment planning and construction by yours truly. Planning hand outs available for mac or the other computers. it makes planning simple. Will have two bowls in different phases of size. Questions will not be heard!!!! Slanderous remarks will be dealt with severely????

Next month (march) we will have Charles Walker's demo on hot hide glue. He needs a warm place to do the demo.

Beads of Courage

We have approximately 9 bowls made up. It sure would be nice to have a even dozen. Come on folks 3 more. Once they are done we can donate them to the hospital thru Roy

SHOW AND TELL

Eddie Wildsmith



Snakewood not sure how long though.. Big snake or little snake

Herb Miles



Two Cherry pcs.



Pecan to left and to right a who dun it

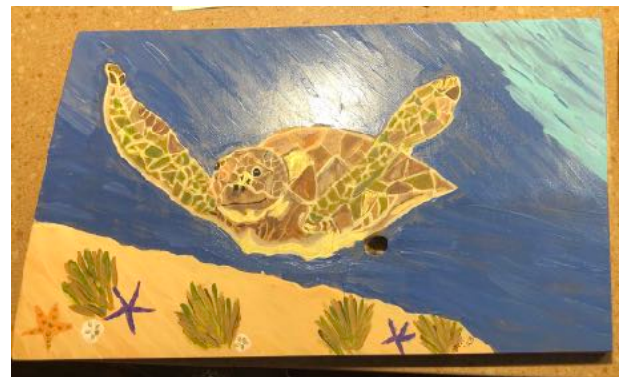
Craig Farnsworth



Cherry bowl with Wenge trim rim Bowl



Maple and Purple Heart Salad



A good Mahogany board gone to the turtles. Mary doing here thing again



Left is Mission to Mars,, one seat left.

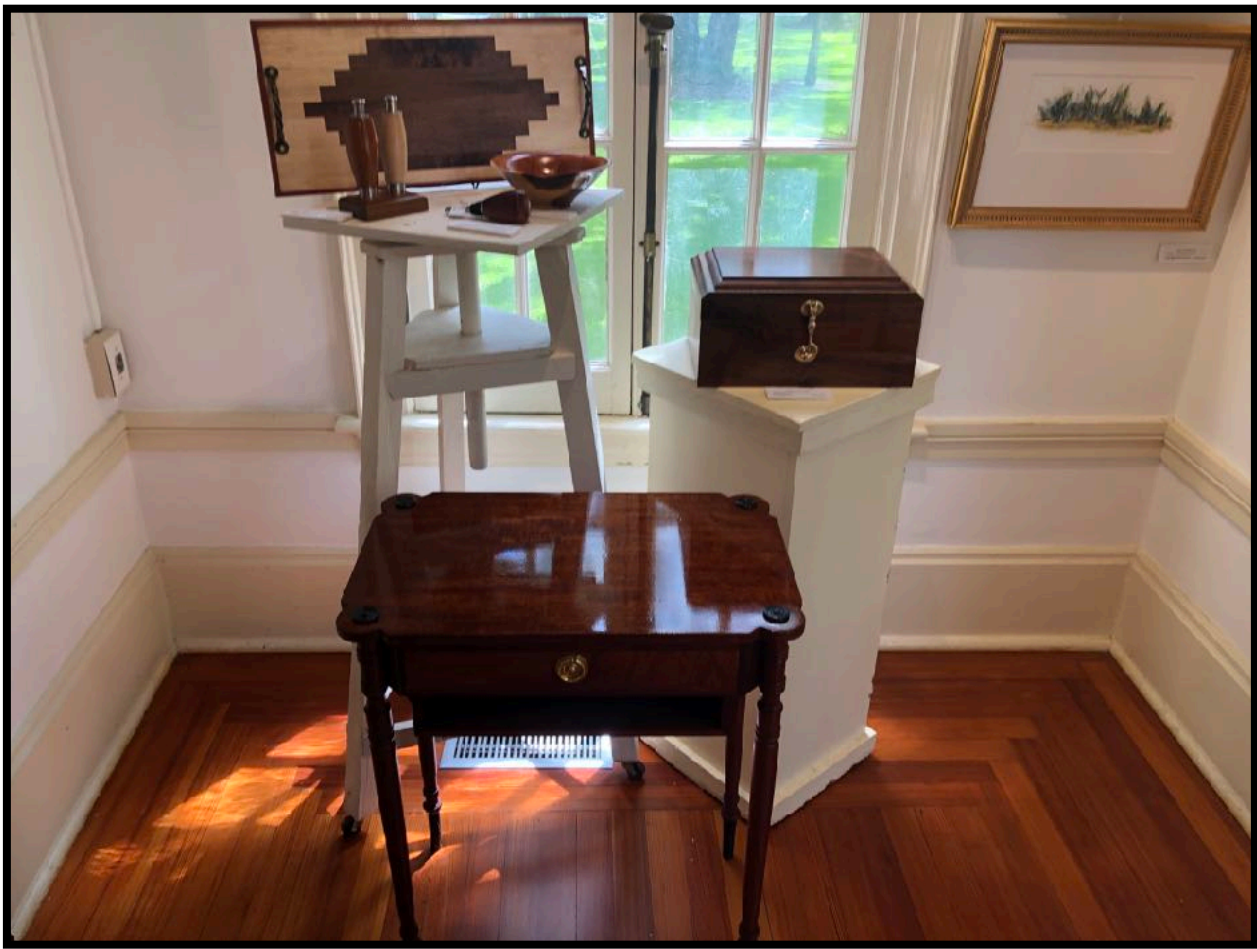
on right is a combo Heart pine urn bottom with pine and wedge build up. That top layer is gone. She is looking good.



Our woodturner worker show at Jekyll Arts this last September. WE should be damn proud.











At the last minute Paul S. sent this picture of a horse

The question ,,,,,, is this a picture of Paul. in his younger years....NO its his grandson



discounts

1. **Case wood supply** www.casewoodworking.com 1725 Grove point rd., Savannah, 912 927 9000
2. **Florida Southern Wood Supply** www.fspcjax.com 5909 w. 5th st. Jacksonville,fl 904 786 4382
min order \$ 350 delivery to you.. 10% off Very good pricing on maple, cherry, oak
3. **Hood Wood Supply** www.hooddistribution.com 5311 Doolittle rd, Jacksonville 904 783 0170
min order \$ 500 delivery to you no discount
4. **PennState** <https://www.pennstateind.com> 1-800-377-7297
Log into site and place your order 10% OFF ITEMS BUT YOU MUST CONTACT THEM AFTER ORDER TO TELL THEM YOU ARE A MEMBER OF GIWW THEY HAVE CURRENT MEMBERSHIP
5. **Peachtree woodworking supply** www.ptreeusa.com 770-458-5539
We do offer a 10% discount to guild members on most items. It does not qualify for machinery and other power tools.
We do not charge your credit card at the time of purchase, only once it ships. The best thing to do would be place the order online and follow up with a email or call with the confirmation number and we can make sure you get the discount. Guild member GIWW
6. **Rockler Woodworking** 4643 River City Dr Ste 101, Jacksonville, FL 32246
10% discount Phone: (904) 404-3240 Manager: Ryan Sedgley
7. **Shelia Bishop on facebook Laser Engraving 912 258 0951**
8. **Woodcraft** Jacksonville 904 721 9796
10% thru out store on sale exceptions give them name and you must be paid up member of giww